

MICHAEL ALUMINUM

EXTRUDED SHAPES • SHEET • PLATE

Product Catalog



Next Day Delivery

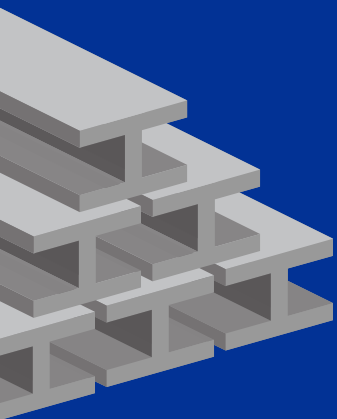
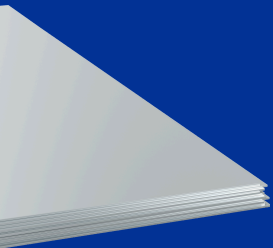
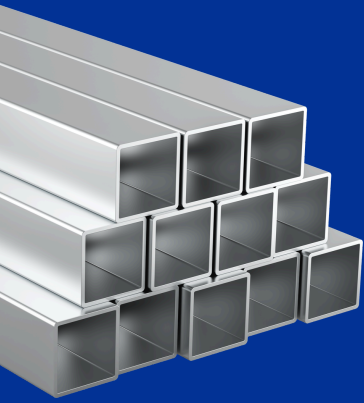
7 Marlen Drive Suite A
Hamilton Township, New
Jersey, 08691
United States

(609) - 575 - 1490
(609) - 929 - 4680

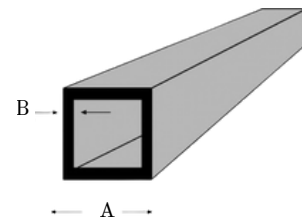
mjohn@michaelaluminum.com
stuart@michealaluminum.com

TABLE OF CONTENTS

Click to go directly
to a section →

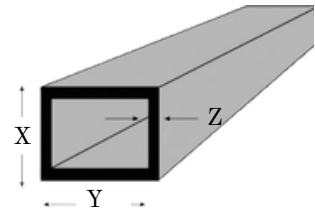


1	SQUARE TUBE
2	RECTANGULAR TUBE
3	ARCHITECTURAL CHANNEL
4	RAILING INVENTORY
5	FLAT BAR
6	ARCHITECTURAL ANGLE
7	SQUARE BAR + ROUND ROD
8	PIPE
9	FENCING INVENTORY
10	FENCE STIFFENERS
11	5 IN POST STIFFENERS
12	ROUND + SQUARE SPINDLES (BLACK POWDER COATED)
13	SHEET / PLATE
14	CANOPY SYSTEM
15	AWNING - STAPLE SYSTEM
16	ROUND TUBE



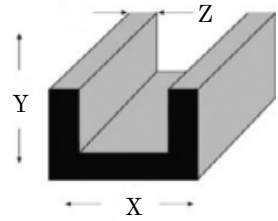
Square Tube (6063 T52 - MILL FINISH)

Part Number	Size (A x B)	Length(In)	Approx. wt/lin ft
105-40-63	5/8" Sq. x .062" w.	288	0.168
110-40-63	3/4" Sq. x .062" w.	288	.205
115-40-63	3/4" Sq. x .125" w.	288	0.374
120-40-63	1" Sq. x .062" w.	288	0.278
123-40-63R	1" Sq. x .093" w. Rad. Corner	288	0.392
125-40-63	1" Sq. x .125" w.	288	0.524
125-40-63R	1" Sq. x .125" w. Rad. Corner	288	0.51
131-40-63	1 1/4" Sq. x .093" w.	288	0.516
130-40-63	1 1/4" Sq. x .125" w.	288	0.675
135-40-63	1 1/2" Sq. x .093" w.	288	0.632
140-40-63	1 1/2" Sq. x .125" w.	288	0.824
151-40-63	2" Sq. x .062" w.	288	0.6
150-40-63	2" Sq. x .093" w.	288	0.851
155-40-63	2" Sq. x .125" w.	288	1.126
156-40-63R	2" Sq. x .125" w. Rad. Corner	288	1.11
157-40-63	2" Sq. x .1875 w.	288	1.63
160-40-63	2" Sq. x .250" w.	288	2.1
170-40-63 (6105 T5)	2 1/2" Sq. x .093" w.	288	1.086
175-40-63	2 1/2" Sq. x .125" w.	288	1.425
180-40-63	3" Sq. x .125" w.	288	1.726
185-40-63	4" Sq. x .125" w.	288	2.324
200-40-63	6" Sq. x .125 w.	288	3.525



Rectangular Tube (6063 T52 - MILL FINISH)

Part Number	Size (X x Y x Z)	Length(In)	Approx. wt/lin ft
100-45-63	3/4" x 1 1/2" x .62" w.	288	0.313
105-45-63R	1" x 2" x .093" w. Rad Corner	288	0.628
110-45-63	1" x 2" x .125" w.	288	0.826
120-45-63	1" x 3" x .125" w.	288	1.125
130-45-63	1" x 4" x .080" w.	288	0.929
131-45-63R	1" x 4" x .080" Rad Corner	288	0.915
140-45-63	1 1/2" x 2" x .125" w.	288	0.976
145-45-63	2" x 3" x .125" w.	288	1.426
150-45-63	2" x 4" x .125" w.	288	1.724
<i>150-45-63R</i>	<i>2" x 4" x .125" w. Rad Corner</i>	<i>288</i>	<i>1.661</i>
160-45-63	2" x 6" x .125" w.	288	2.326
170-45-63	2" x 8" x .125" w.	288	2.925



Architectural Channel (6063 T52 - MILL FINISH)

Part Number	Size (X x Y x Z)	Length(In)	Approx. wt/lin ft
105-20-63	1" x 1/2" x 1/8" w.	240	0.262
110-20-63	1" x 1" x 1/8" w.	240	0.412
<i>120-20-63</i>	<i>1 1/4" x 1/2" x 1/8" w.</i>	<i>240</i>	<i>0.3</i>
120-20-63-288	1 1/4" x 1/2" x 1/8" w.	288	0.3
<i>121-20-63</i>	<i>1 1/4" x 3/4" x 1/8" w.</i>	<i>240</i>	<i>0.376</i>
121-20-63-288	1 1/4" x 3/4" x 1/8" w.	288	0.376
125-20-63	1 1/2" x 1/2" x 1/8" w.	240	0.337
125-20-63-288	1 1/2" x 1/2" x 1/8" w.	288	0.337
<i>130-20-63</i>	<i>1 1/2" x 3/4" x 1/8" w.</i>	<i>240</i>	<i>0.413</i>
131-20-63	1 1/2" x 3/4" x 1/8" w.	288	0.413
145-20-63	1 1/2" 1 1/2" x 1/8" w.	240	0.637
<i>155-20-63</i>	<i>2" x 1" x 1/8" w.</i>	<i>240</i>	<i>0.563</i>
155-20-63-288	2" x 1" x 1/8" w.	288	0.563
160-20-63-288	2" x 2" x 1/8" w.	288	0.861



Railing Custom Inventory

Dixie Cap Railing 6063 T5 x 20' Long

120-100-63
1.750" Small Dixie Cap
Accepts 1" and 1 1/4" Channel

1.750 | 562

121-100-63
1.928" Medium Dixie Cap
Accepts 1" and 1 1/4" Channel

1.928 | .750

122-100-63
2.25" Large Dixie Cap
Accepts 1 1/4" and 1 1/2" Channel

2.250 | 875

Colonial Railing 6063 T5 x 20' Long

150-100-63
2 1/2 Colonial Top
Accepts 3/4" Picket

2.500 | 1.250

151-100-63
2 1/4 Colonial Bottom

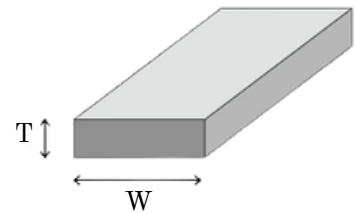
2.250 | 1.500

Hollow Top Cap 6063 T5 x 24' Long

140-100-63
2 5/8 Hollow Top Cap
Accepts 3/4" and 1" Pickets
~Use with 2 in Post

2.625 | 1.500

Pickets	QuikRok	Posts (A x B)
1/2" Sq. Bar 5/8" Sq. Bar 3/4" Sq. Bar 5/8" x .062" w. Sq. Tube 3/4" sq x .062" w. Sq. Tube 3/4" x 1 1/2" x .062" Rect. Tube	Hydraulic Cement: QR-100-PAIL Quik Rok is not to be used for anchoring balcony railings or other similar life safety structures.	2" x 1/4" .w. Sq Tube 2 1/2" x .093" w. Sq Tube 2 1/2" x 1/8" w. Sq Tube 3" x 1/8" w. Sq Tube 4" 1/8" w. Sq Tube
Horizontal Pickets	Channels (A x B x C)	
1/2" Sch 40 Pipe (A) 3/4" x 1/8" Round Tube (A x B)	1 1/4" x 1/2" x 24' 1 1/2" x 1/2" x 1/8" x 24' 1 1/4 x 1/2" x 1/8" x 24' 1 1/4 x 3/4 x 1/8" x 24' 1 1/2 x 3/4 x 1/8" x 24' 2" x 1" x 1/8" 24'	



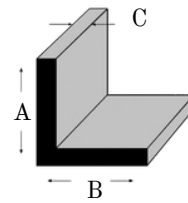
Flat Bar (6061 T6511 - MILL FINISH)

Part Number	Size (TxW)	Length(In)	Approx. wt/lin ft
110-30-61	1/8" x 1.0"	144	.15
111-30-05 (6005A - T61)	1/8" x 1.0"	144	.15
134-30-61	1/4" x 3.0"	144	.9
136-30-61	1/4" x 4.0"	144	1.2
140-30-61	3/8" x 3/4"	144	.338
144-30-61	3/8" x "4.0"	144	1.8
146-30-61	3/8" x 5.0"	144	2.25
148-30-61	3/8" x 6.0"	144	2.7
150-30-61	1/2" x 6.0"	144	3.528

Flat Bar (6063 T52 - MILL FINISH)

Part Number	Size (TxW)	Length(In)	Approx. wt/lin ft
110-30-63	1/8" x 1.0"	240	.15
111-30-63	1/8" x 2.0"	240	0.3
120-30-63	3/16" x 1.0"	240	0.225
121-30-63	3/16" x 1 1/2"	240	0.337
122-30-63	3/16" x 2.0"	240	0.451
132-30-63	1/4" x 2.0"	240	0.6
134-30-63	1/4" x 3.0"	240	0.9
136-30-63	1/4" x 4.0"	240	1.2
140-30-63	3/8" x 3/4"	240	0.338
141-30-63	3/8" x 1.0"	240	0.45
142-30-63	3/8" x 1 1/2"	240	0.674
143-30-63	3/8" x 2.0"	240	0.9
146-30-63	3/8" x 5.0"	240	0.9
147-30-63	3/8" x 6.0"	240	2.7

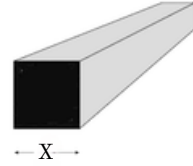
Available for Mill Order



Architectural Angle (6063 T52 - MILL FINISH)

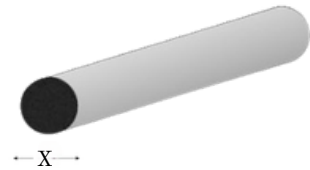
Part Number	Size (A x B x C)	Length(In)	Approx. wt/lin ft
110-60-63	3/4 " x 3/4" x 1/8" x. SC Angle	240	0.206
120-60-63	1" x 1" x 1/8" x. SC Angle	240	0.281
<i>130-60-63</i>	<i>1 1/4" x 1 1/4" x 1/8" w. SC Angle</i>	<i>240</i>	<i>0.356</i>
140-60-63	1 1/2" x 1 1/2" x 1/8" w. SC Angle	240	0.431
142-60-63	1 1/2" x 1 1/2" x 3/16" w. SC Angle	240	0.633
150-60-63	2" x 2" x 1/8" x. SC Angle	240	0.581
153-60-63	2" x 2" x 3/16" w. SC Angle	240	0.856
155-60-63	2" x 2" x 1/4" x SC Angle	240	1.124
170-60-63	3" x 3" x 1/4" w SC Angle	240	1.726

Square Bar (6063 T52- MILL FINISH)



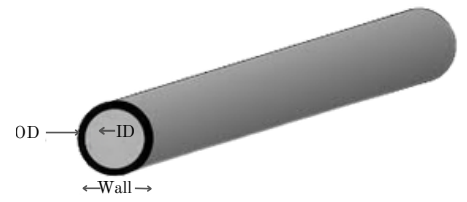
Part Number	Size (X)	Length(In)	Approx. wt/lin ft
500-90-63	1/2"	240	0.3
505-90-63	5/8"	240	0.458
510-90-63	3/4"	240	0.674

Round Rod (6061 T6511- MILL FINISH)



Part Number	Size (X)	Length(In)	Approx. wt/lin ft
130-25-61	1.375"	144	0.45
200-25-61	2.0"	144	0.45

Available for Mill Order



Sch 40 Pipe (6063 T52 - MILL FINISH)

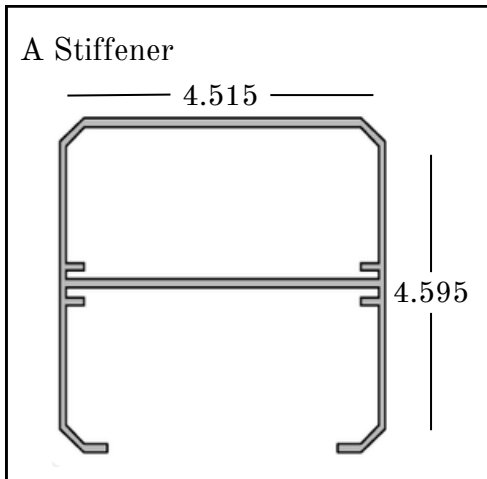
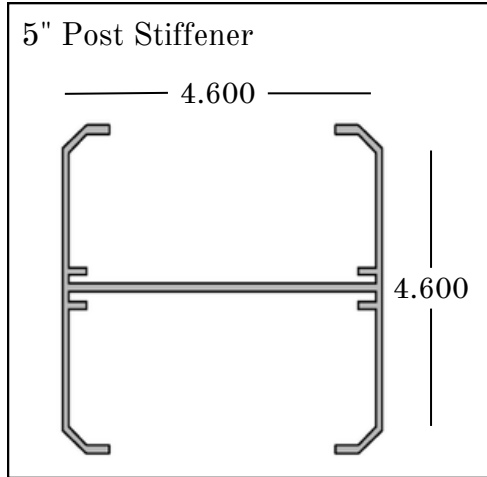
Part Number	Size	OD x ID x Wall	Length(In)	Approx. wt/lin ft
101-55-63-288	1/2"	.840 x .622 x .109	288	0.294
110-55-63	1.0"	1.315 x 1.049 x .133	240	0.581
115-55-63	1 1/4"	1.660 x 1.380 x .140	240	0.786
120-55-63	1 1/2"	1.900 x 1.610 x .145	240	.94

Sch 40 Pipe (6061 T6 - MILL FINISH)

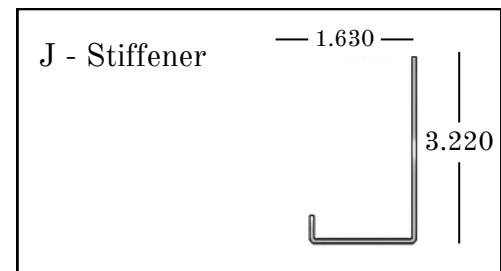
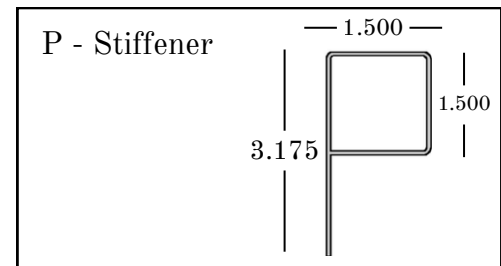
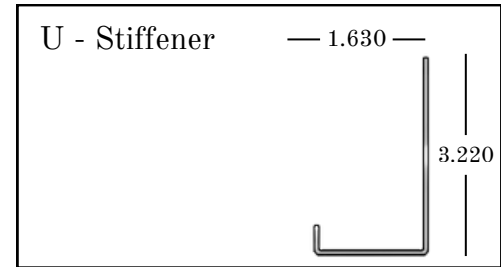
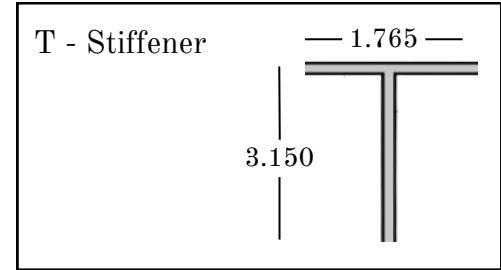
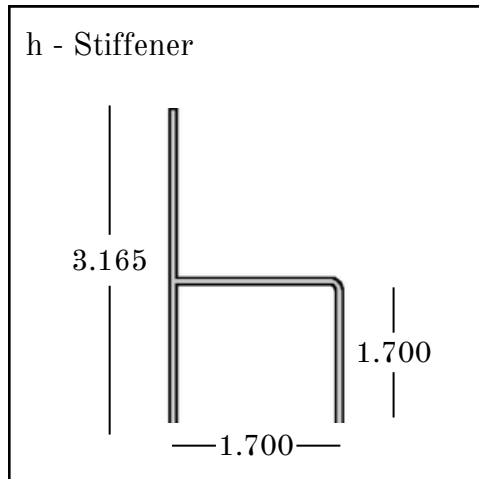
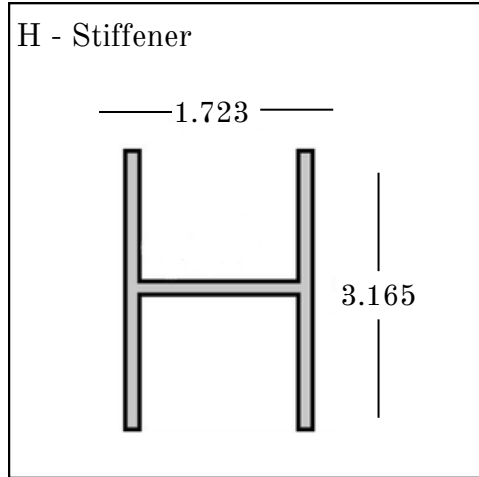
Part Number	Size	OD x ID x Wall	Length(In)	Approx. wt/lin ft
115-55-61	1 1/4"	1.660 x 1.380 x .140	240	1.264
<i>110-55-61</i>	<i>1.0"</i>	<i>1.315 x 1.049 x .133</i>	<i>240</i>	<i>0.581</i>
120-55-61	1 1/2"	1.900 x 1.610 x .145	240	0.94
<i>125-55-61</i>	<i>2.0"</i>	<i>2 3/8 x 2.067 x .154</i>	<i>240</i>	<i>1.264</i>

Fencing Custom Inventory

Post Stiffeners



Rail Stiffeners



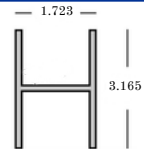
Square Tube (A x B)	Rectangular Tube
2" x .062 2" x .125 2" x .250 3" x .125 4" x .125 6" x .125	1 x 3"
	Sharp Corner
	1 x 4"
QuikRok	Radius Corner
	1 x 4"





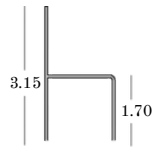
Fence Stiffeners (6063 T6 - MILL FINISH)

H-Stiffeners



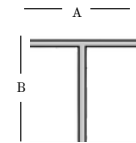
Part Number	Size (A x B x W)	Length(In)	Approx. wt/lin ft
10-80-63-72-H	H-Stiffener 1.723" x 3.165" x .062" wall	72	0.59
11-80-63-94-H	H-Stiffener 1.723" x 3.165" x .062" wall	94	0.59
12-80-63-96-H	H-Stiffener 1.723" x 3.165" x .062" wall	96	0.59
13-80-63-120-H	H-Stiffener 1.723" x 3.165" x .062" wall	120	0.59
14-80-63-192-H	H-Stiffener 1.723" x 3.165" x .062" wall	192	0.59

h-Stiffeners (6063 T6 - MILL FINISH)



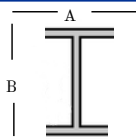
Part Number	Size (A x B x W)	Length(In)	Approx. wt/lin ft
20-81-63-48-h	<i>h-Stiffener w/tabs 1.70" x 3.15" x .060" wall</i>	48	0.412148
21-81-63-72-h	<i>h-Stiffener w/tabs 1.70" x 3.15" x .060" wall</i>	72	0.412148
22-81-63-96-h	<i>h-Stiffener w/tabs 1.70" x 3.15" x .060" wall</i>	96	0.412148

T-Stiffeners (6063 T6 - MILL FINISH)



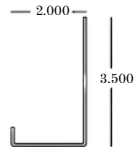
Part Number	Size (A x B x W)	Length(In)	Approx. wt/lin ft
10-82-63-94-T	T-Stiffener 1.765" x 3.15" x .055" wall	94	0.3464
10-82-63-96-T	T-Stiffener 1.765" x 3.15" x .055" wall	96	0.3464

I-Stiffeners (6063 T6 - MILL FINISH)



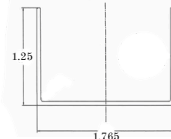
Part Number	Size (A x B x W)	Length(In)	Approx. wt/lin ft
30-80-63-94-I	<i>I-Stiffener 1.770" x 1.850" x .065" wall</i>	94	0.43

J-Stiffeners (6063 T6 - MILL FINISH)



Part Number	Size (A x B x W)	Length(In)	Approx. wt/lin ft
82-63-48	2" x 3.5" x .055 wall	48	.328

U-Stiffeners (6063 T6 - MILL FINISH)



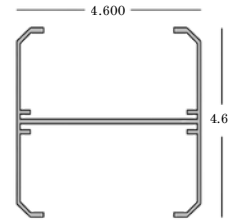
Part Number	Size (A x B x W)	Length(In)	Approx. wt/lin ft
81-63-94	1.765" x 1.25" x .050" wall	94	.247

Available for Mill Order



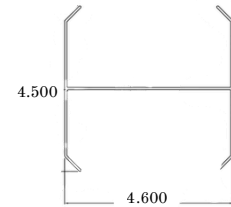
Post Stiffeners (6063 T6 - MILL FINISH)

5" H-Post Stiffeners (6063 T6 - MILL FINISH)



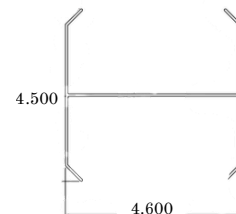
Part Number	Size	Length(In)	Approx. wt/lin ft
101-85-63-72	5" H-Post Stiffener	72	1.83
100-85-63-96	5" H-Post Stiffener	96	1.83
<i>110-85-63</i>	<i>5" H-Post Stiffener</i>	<i>288</i>	<i>1.83</i>

5" H-Post Stiffeners LT (6063 T6 - MILL FINISH)



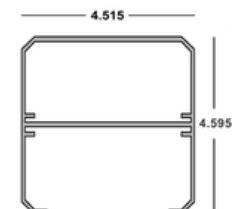
Part Number	Size	Length(In)	Approx. wt/lin ft
LT-100-85-63-70	5" H-Post Stiffener LT	70	1.19
LT-100-85-63-96	5" H-Post Stiffener LT	96	1.19
LT-100-85-63-108	5" H-Post Stiffener LT	108	1.19

5" H-Post Stiffeners MED (6063 T6 - MILL FINISH)



Part Number	Size	Length(In)	Approx. wt/lin ft
MED-100-85-63-94	5" H-Post Stiffener MED	94	1.56

5" A-Post Stiffeners (6063 T6 - MILL FINISH)



Part Number	Size	Length(In)	Approx. wt/lin ft
150-85-63-72-A	5" A-Post Stiffener	72	2.188
150-85-63-96-A	5" A-Post Stiffener	96	2.188
<i>150-85-63-288-A</i>	<i>5" A-Post Stiffener</i>	<i>288</i>	<i>2.188</i>

Available for Mill Order



Round Spindles (6063 T52 Black Powder Coated MATTE)

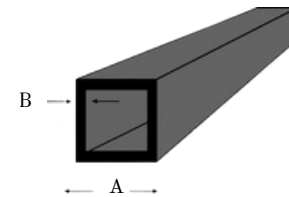


Part Number	Size (Outer Dimension x Wall)	Length(In)	Approx. wt/lin ft
100-130-63-PBL-30	3/4" Rd. x .045" w.	30.5	0.127
105-130-63-PBL-32	3/4" Rd. x .045" w.	32	0.127
106-130-63-PBL-38	3/4" Rd. x .045" w.	38	0.127
<i>110-130-63-PBL-96</i>	<i>3/4" Rd. x .045" w.</i>	<i>96</i>	<i>0.127</i>

Round Spindles (6063 T52 Black Powder Coated GLOSS)

Part Number	Size (Outer Dimension x Wall)	Length(In)	Approx. wt/lin ft
<i>105-130-63-PBL-32</i>	<i>3/4" Rd. x .045" w.</i>	<i>32</i>	<i>0.127</i>
<i>106-130-63-PBL-38</i>	<i>3/4" Rd. x .045" w.</i>	<i>38</i>	<i>0.127</i>
<i>110-130-63-PBL-96</i>	<i>3/4" Rd. x .045" w.</i>	<i>195.5</i>	<i>0.127</i>

Square Spindles (6063 T52 Black Powder Coated MATTE)



Part Number	Size (A x B)	Length(In)	Approx. wt/lin ft
200-130-63-PBL-32	3/4" Sq. x .045" w.	32	0.166
200-130-63-PBL-36	3/4" Sq. x .045" w.	36	0.166
200-130-63-PBL-38	3/4" Sq. x .045" w.	38	0.166
205-130-63-PBL-96	3/4" Sq. x .045" w.	96	0.166

Square Spindles (6063 T52 Black Powder Coated GLOSS)

Part Number	Size (A x B)	Length(In)	Approx. wt/lin ft
<i>200-130-63-PBL-32</i>	<i>3/4" Sq. x .045" w.</i>	<i>32</i>	<i>0.166</i>
<i>200-130-63-PBL-36</i>	<i>3/4" Sq. x .045" w.</i>	<i>36</i>	<i>0.166</i>
<i>200-130-63-PBL-38</i>	<i>3/4" Sq. x .045" w.</i>	<i>38</i>	<i>0.166</i>
<i>205-130-63-PBL-96</i>	<i>3/4" Sq. x .045" w.</i>	<i>96</i>	<i>0.166</i>

Available for Mill Order



Sheet / Plate

3003 H14- MILL FINISH

Part Number	Size	Approx wt. Sheet (lbs)
<i>340-300-03-96</i>	<i>.040" x 48" x 96"</i>	<i>18.24</i>
<i>340-300-03-120</i>	<i>.040" x 48" x 120"</i>	<i>22.80</i>
363-300-03-96	.063" x 48" x 96"	28.75
363-300-03-120	.063" x 48" x 120"	35.90
<i>363-300-03-144</i>	<i>.063" x 48" x 144"</i>	<i>43.50</i>
363-300-03-60120	.063" x 60" x 120"	44.90
380-300-03-96	.080" x 48" x 96"	28.75
380-300-03-120	.080" x 48" x 120"	35.93
<i>390-300-03-96</i>	<i>.090" x 48" x 96"</i>	<i>41.20</i>
<i>390-300-03-120</i>	<i>.090" x 48" x 120"</i>	<i>51.33</i>
390-300-03-60120	.090" x 60" x 120"	64.16
3125-300-03-96	.125" x 48" x 96"	57.20
3125-300-03-120	.125" x 48" x 120"	71.28
<i>3125-300-03-144</i>	<i>.125" x 48" x 144"</i>	<i>85.55</i>
3125-300-03-60120	.125" x 60" x 120"	89.10
273-300-03-96	.1875" x 60.0" x 96.0"	110.00

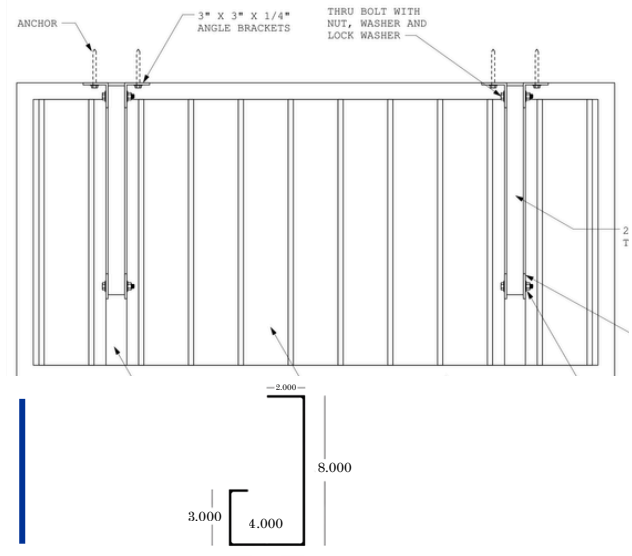
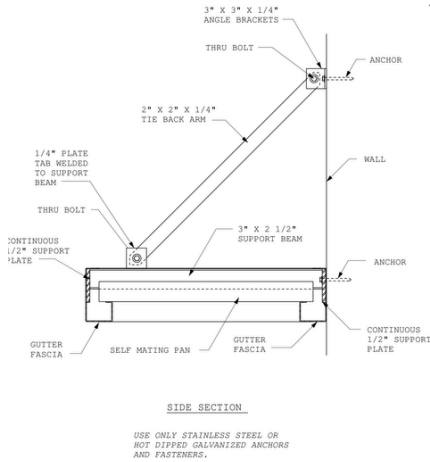
5052 H32- MILL FINISH

Part Number	Size	Approx wt. Sheet (lbs)
<i>340-500-52-96</i>	<i>.040" x 48" x 96"</i>	<i>17.90</i>
<i>340-500-52-120</i>	<i>.040" x 48" x 120"</i>	<i>22.40</i>
363-500-52-96	.063" x 48" x 96"	28.16
<i>363-500-52-120</i>	<i>.063" x 48" x 120"</i>	<i>35.20</i>
<i>363-500-52-144</i>	<i>.063" x 48" x 144"</i>	<i>42.24</i>
<i>363-500-52-60120</i>	<i>.063" x 60" x 120"</i>	<i>44.00</i>
380-500-52-96	.080" x 48" x 96"	35.76
380-500-52-120	.080" x 48" x 120"	44.70
<i>390-500-52-96</i>	<i>.090" x 48" x 96"</i>	<i>40.25</i>
<i>390-500-52-120</i>	<i>.090" x 48" x 120"</i>	<i>50.30</i>
390-500-52-60120	.090" x 60" x 120"	62.86
3125-500-52-96	.125" x 48" x 96"	55.88
3125-500-52-120	.125" x 48" x 120"	69.80
<i>3125-500-52-144</i>	<i>.125" x 48" x 144"</i>	<i>83.76</i>
3125-500-52-60120	.125" x 60" x 120"	87.25

Available for Mill Order



Aluminum Canopy

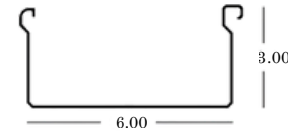


J-Fascia (Gutter) (6063 T6 - MILL FINISH)

Part Number	Size	Length (In)	Approx. wt/lin ft
120-170-63	8" x 4" x 3" J-Fascia (Gutter)	288	2.713

Self Mating Pan (6063 T6 - MILL FINISH)

Part Number	Size	Length (In)	Approx. wt/lin ft
110-170-63	3" x 6" Self Mating Pan (Canopy)	288	1.026



Canopy Support Beam

Part Number	Alloy & Temper	Size	Length (In)	Approx. wt/lin ft
115-70-61	6061 T6	3" x 2.5" x .130" AA I-Beam	300	2.068
160-40-63	6063 T52	2" Sq. x .250" w. Square Tube	288	2.1

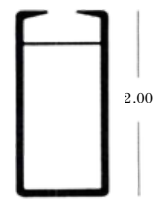
Tie Back Arm

Part Number	Alloy & Temper	Size	Length (In)	Approx. wt/lin ft
155-40-63	6063 T52	2" Sq. x .125 w. Square Tube	288	1.126
115-55-61	6061 T6	1 1/4 Sch. 40 Pipe	240	.786
120-55-61	6061 T6	1 1/2 Sch. 40 Pipe	240	0.94

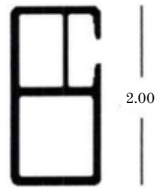
Available for Mill Order



MP1-A



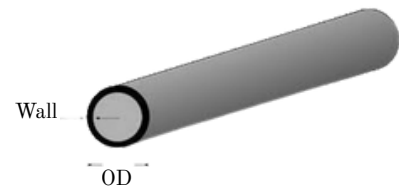
MP3



MP3S

Staple System Extrusions (6063 T52 - MILL FINISH)

Part Number	Size	Length(In)	Approx. wt/lin ft
100-110-63-MP1A	MP-1A 1" x 1" x .100" wall Staple Extrusion	288	0.486
105-110-63-MP-3	MP-3 1" x 2" x .080" wall End Staple Extrusion	288	0.5472
110-110-63-MP3S	MP-3S 1" x 2" x .080" wall Side Staple Extrusion	288	0.629



Round Tube (6005 A T61 - MILL FINISH)

Part Number	Size (OD x W)	Length(In)	Approx. wt/lin ft
120-50-05	3/4" x .125"	288	0.294

Round Tube (6063 T52 - MILL FINISH)

Part Number	Size (OD x W)	Length(In)	Approx. wt/lin ft
<i>160-50-63</i>	<i>2.0" x .1875"</i>	<i>288</i>	<i>1.252</i>